



Handwritten text, possibly a signature or name, written in a cursive script.

Handwritten text in a cursive script, appearing to be the beginning of a letter or document.

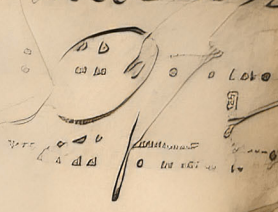
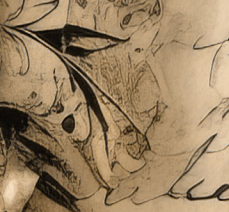
Handwritten text in a cursive script, continuing the main body of the document.

Handwritten text in a cursive script, continuing the main body of the document.

Handwritten text in a cursive script, continuing the main body of the document.

Handwritten text in a cursive script, continuing the main body of the document.

Handwritten text in a cursive script, appearing to be the end of the document.



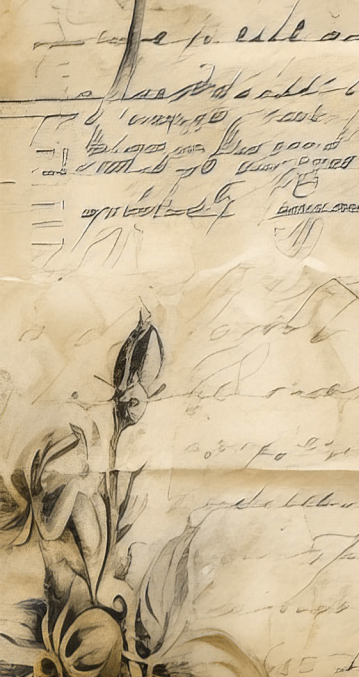
Small handwritten text or a stamp impression located below the circular stamp.

Small handwritten text or a stamp impression located in the lower right area.





[Faint, mostly illegible handwritten text in cursive script, likely bleed-through from the reverse side of the page. The text is written in dark ink on aged, yellowed paper.]



Handwritten text in cursive script, partially obscured by a circular stamp at the top center. The text is dense and fills the upper portion of the page.

Handwritten text in cursive script, continuing from the previous section. It appears to be a letter or a journal entry.

120 ANLIVES
 A circular stamp with the year "1801" and the word "LONDON" is visible. The text around it is handwritten and partially legible.

Handwritten text in cursive script, located at the bottom of the page. It seems to be a continuation of the text above.

Handwritten text in cursive script, located on the right side of the page. It is written in a similar style to the text on the left.

Handwritten text in cursive script, continuing on the right side of the page. The script is consistent with the rest of the document.

Handwritten text in cursive script, located at the bottom right of the page. It appears to be the end of a section or a paragraph.

