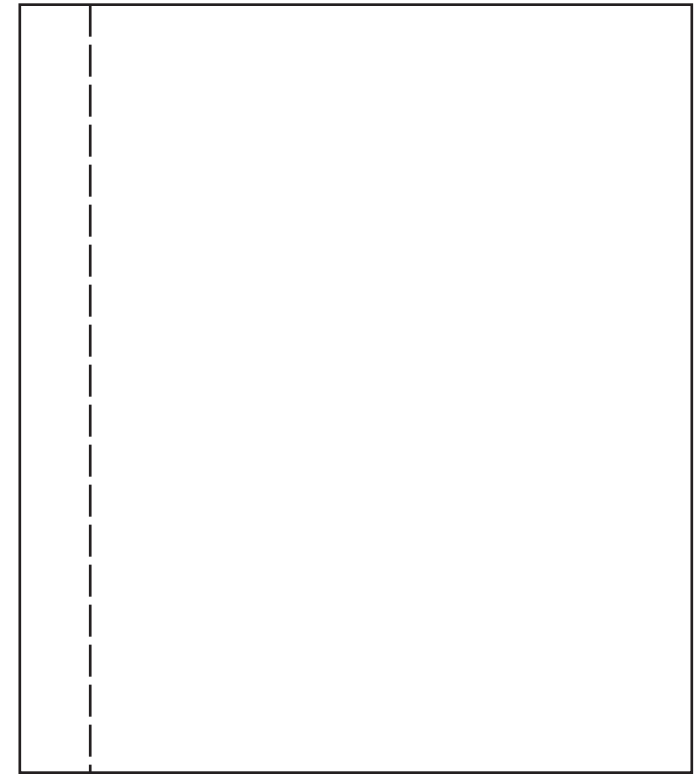
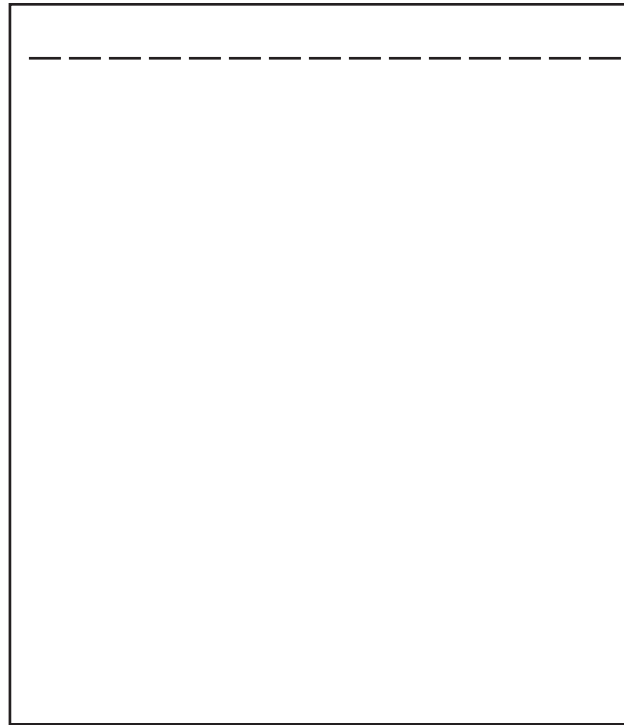
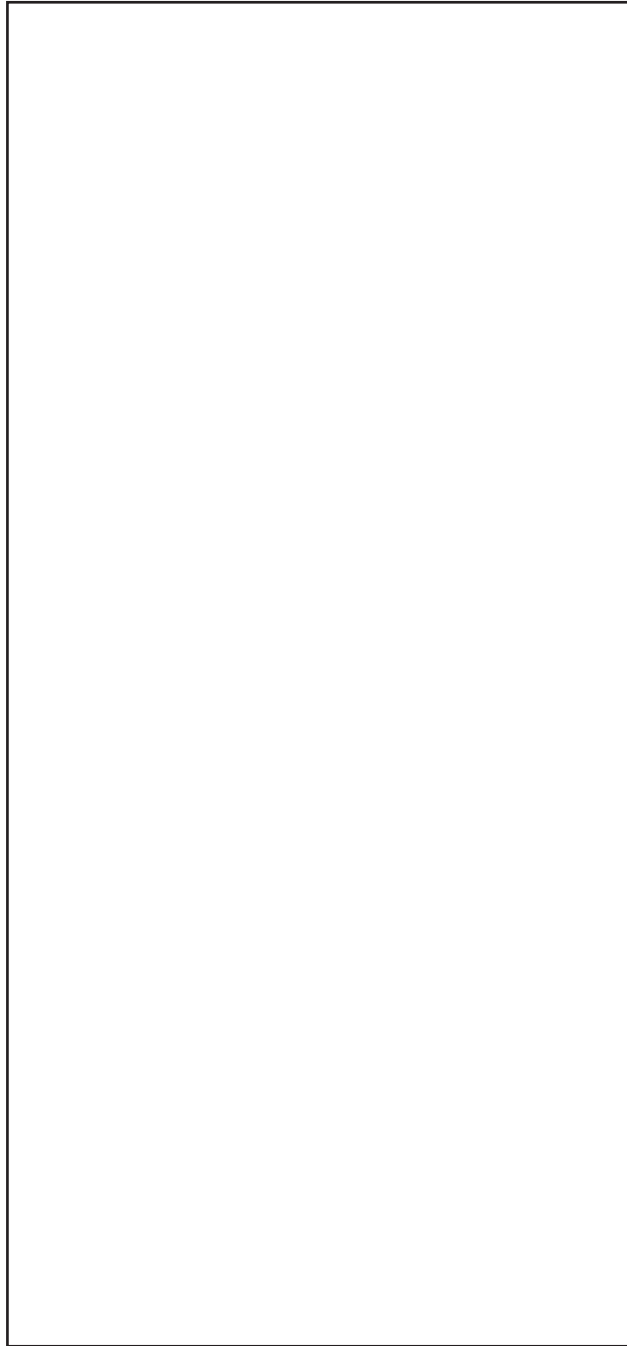


### Cascading insert.

You will need to cut 4 of these. They measure  $6\frac{1}{2}'' \times 4\frac{3}{4}''$  score at  $\frac{1}{2}''$  on the long side.

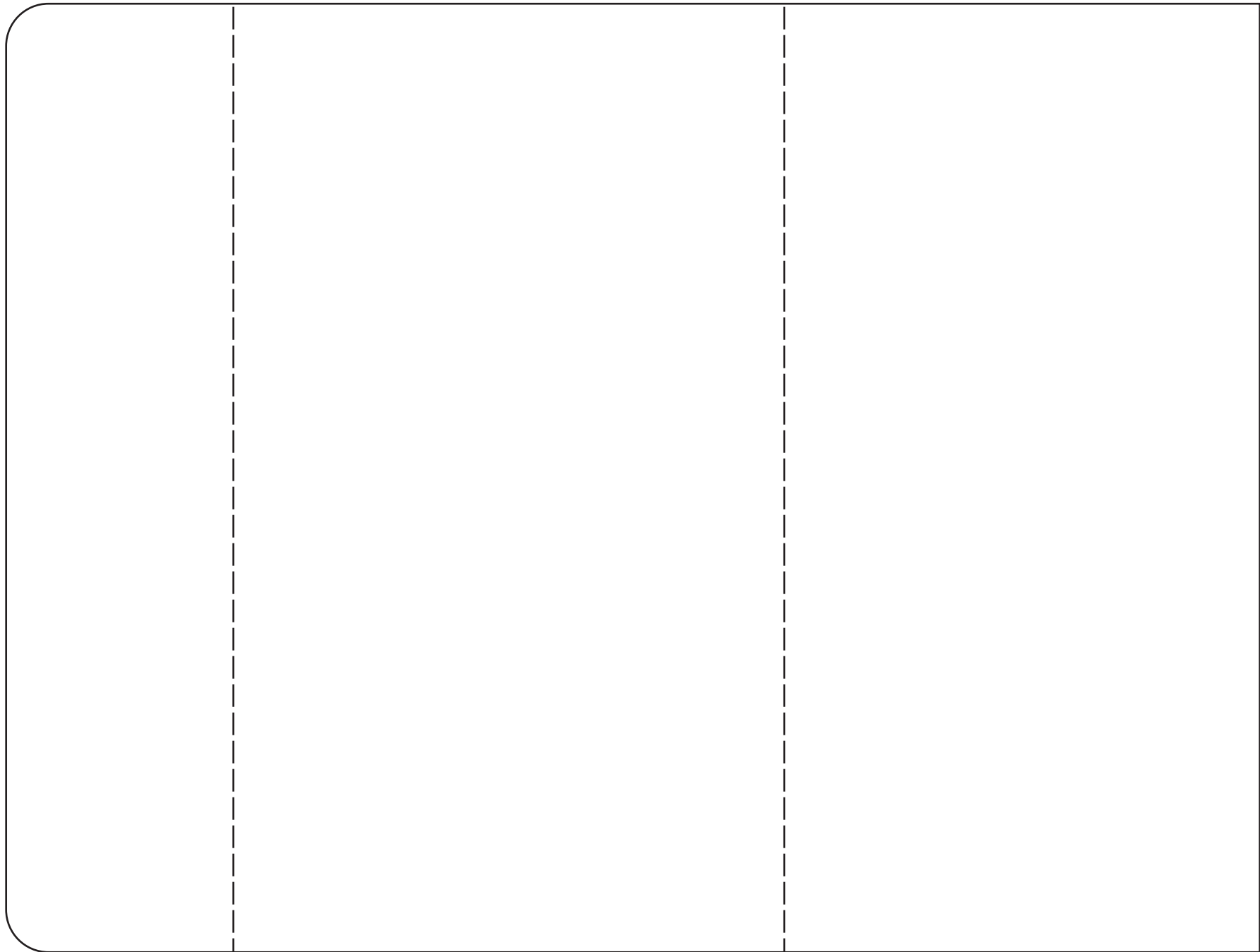
Belly band is cut at  $1'' \times 7\frac{1}{2}''$  score on one end at  $\frac{1}{2}''$  and round corners on other end.

## Decorative triple flip pockets

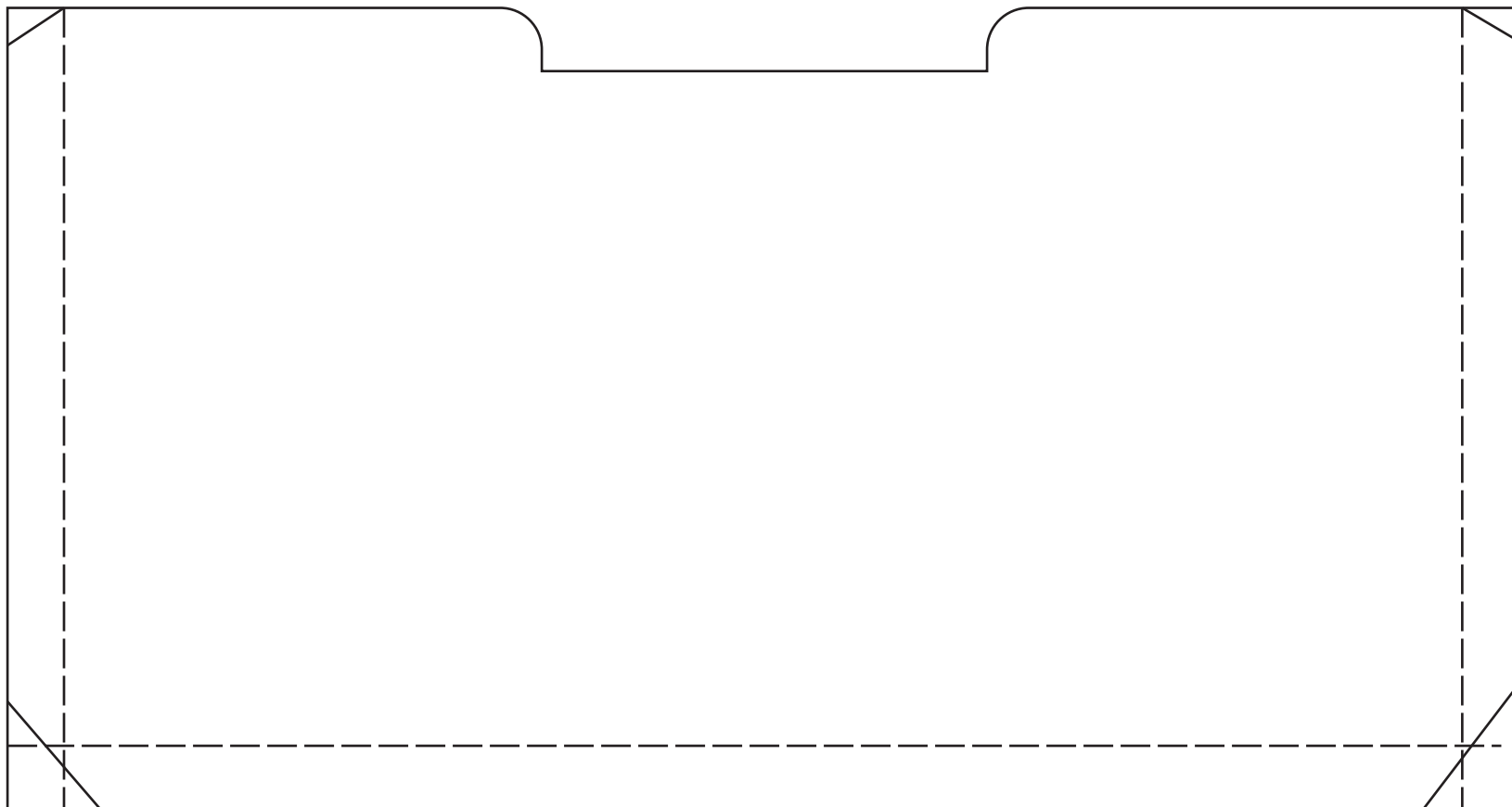


First piece is cut at  $7 \times 3 \frac{1}{4}$ "  
second two pieces are cut at  
 $3 \frac{1}{4} \times 3 \frac{3}{4}$ " and score at  $\frac{1}{2}$ "  
on the long side. Third piece is  
cut at  $4 \times 3 \frac{1}{2}$ " and scored on  
the short side. This piece we  
will punch a decorative edge  
on. So if you have an edge  
punch get it out we will use it  
on this.

Envelope booklet attachment 9 1/4"x7" score at 1 1/2" & 5 1/2"

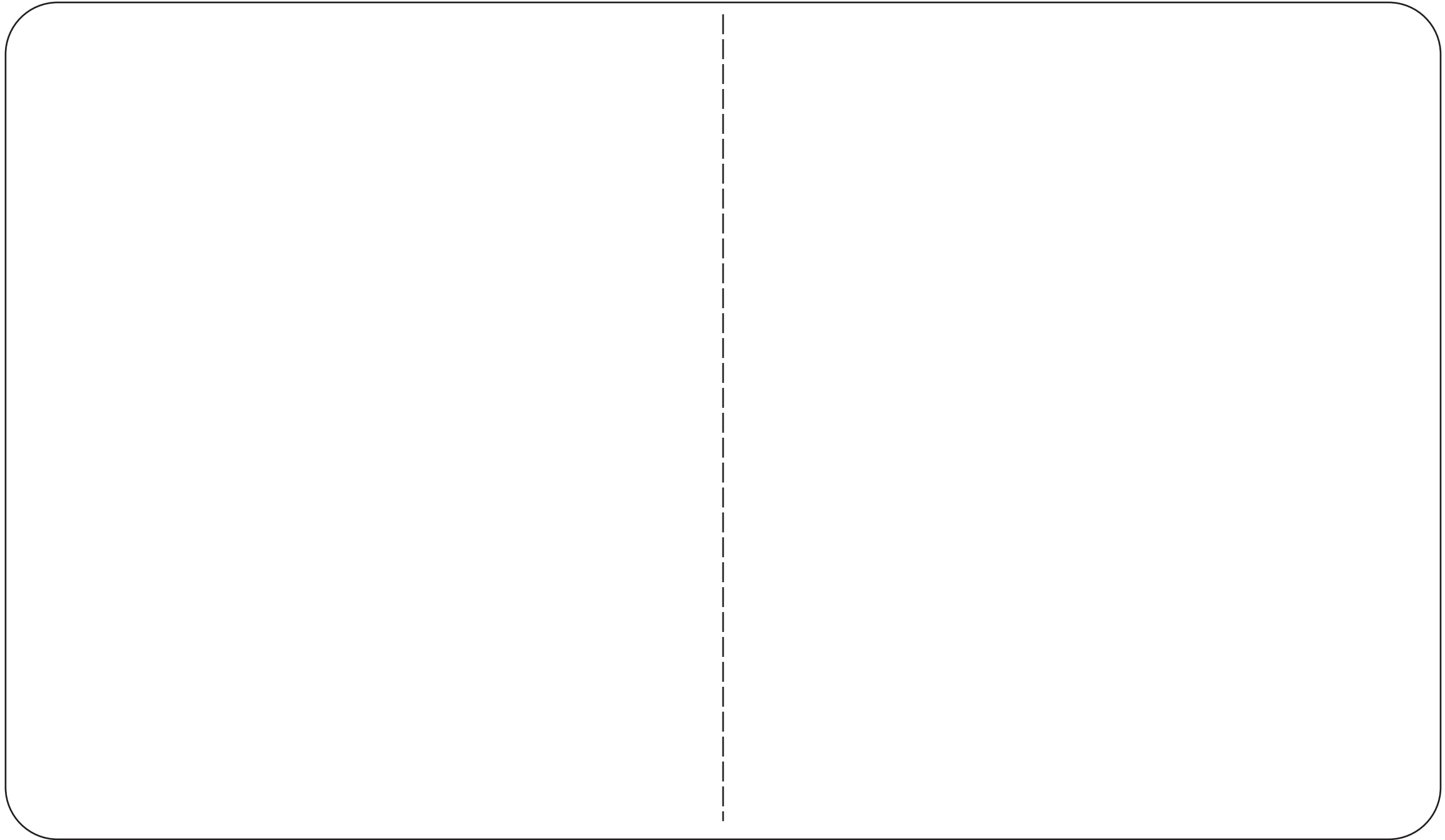


Pocket for #1 booklet 8 1/2"x4 1/2" score on three sides



#1 booklet

Booklet for pocket ~ this is 12"x7" and you will score in the center



File folder insert 11 1/4"x7" score at 5 1/2"

